

MLL1 Antibody (BL1289)

Affinity Purified



Produced in Rabbit

Catalog No. **Size**
A300-086A 0.1 ml

Conditions

Storage: 2 - 8⁰ C
Antibody Concentration: 1 mg/ml
Physical State: Liquid
Buffer: Tris-citrate/phosphate, pH 7 to 8
Preservative: 0.1% Sodium Azide
Shelf life: 1 year from date of receipt

Production Procedures

Antibody was affinity purified using an epitope specific to MLL1 immobilized on solid support.

The epitope recognized by A300-086A maps to a region between residues 720 and 780 of human myeloid/lymphoid or mixed-lineage leukemia 1 using the number given in Swiss-Prot entry Q03164 (GeneID 4297). The epitope is found in the N-terminal 300 kDa fragment generated by proteolytic cleavage. The epitope is found in isoform 14P-18B of MLL1.

Antibody concentration was determined by extinction coefficient: absorbance at 280 nm of 1.4 equals 1.0 mg of IgG.

Notes

Centrifuge tube to remove product from lid.
Reactivity: Human and mouse. Other species have not been tested.
Alternative Names: MLL, MLL1, myeloid/lymphoid or mixed-lineage leukemia, HRX, TRX1, HTRX1, human trithorax 1, ALL-1, acute lymphocytic leukemia 1, CXXC7, HGNC:7132.

Country of Origin: USA

For In Vitro laboratory use only. Not for any clinical, therapeutic, or diagnostic use in humans or animals. Not for animal or human consumption.

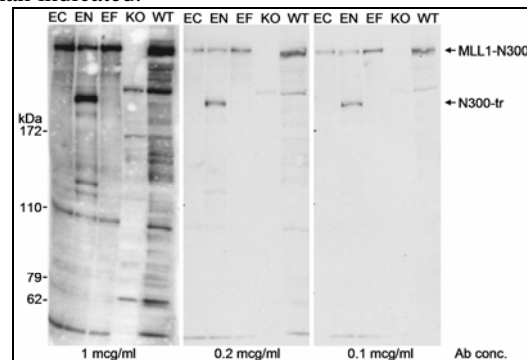
This product may not be resold or modified for resale without the prior written approval of Bethyl Laboratories, Inc.

Applications

Optimal working dilutions should be determined experimentally by the investigator. Prepare working dilution immediately before use. Suggested starting dilutions are as follows.

Western Blot: 1:1,000 – 1:10,000
Immunoprecipitation: 1 to 4 mcg/mg of lysate
Immunohistochemistry/paraffin: 1:100 – 1:250

In some cases, the antibody may be diluted further than indicated.



Detection of Human and Mouse MLL1 by Western Blot. *Samples:* Nuclear extract (50 mcg for WT and KO; 10 mcg for EF, EN and EC) from 293T cells that were transfected with MLL1 c-terminal 180 kDa fragment (EC), 293T cells transfected with N-terminally truncated MLL1 fragment (EN; N300-tr), 293T cells transfected with MLL1 N-terminal 300 kDa fragment (EF), MLL1 *+/+* mouse embryonic stem cells (WT), and MLL1 *-/-* embryonic stem cells (KO). *Antibody:* Affinity purified rabbit anti-MLL1 antibody BL1289 (Cat. No. A300-086A) used at the indicated concentrations. *Detection:* One second exposure with chemiluminescence.

Related Products

R anti-MLL1 antibody (BL1290)	A300-087A
R anti-TRX2 antibody (BL835)	A300-113A
R anti-RbBP5 antibody (BL766)	A300-109A
MLL1 Blocking Peptide BP1289	BP300-086

Product References

1. Milne et al., Published online before print September 30, 2005 *Proc. Natl. Acad. Sci. USA*, 10.1073.
2. Dou et al., *Cell* 121 (6):873-885, 2005.
3. Milne et al., *PNAS* 102 (3):749-754, 2005.

MLL1 Antibody (BL1289)
Affinity Purified

Produced in Rabbit

Catalog No. **Size**
A300-086A 0.1 ml



MATERIAL SAFETY DATA SHEET

Contents Description

This product contains rabbit immunoglobulin G (IgG) protein in Tris-citrate/phosphate buffer, pH 7 to 8 with 0.1% Sodium Azide (NaN_3).

Hazardous Ingredients

Rabbit IgG Protein - No known toxicity for this biological material.

Sodium Azide (NaN_3) - AZIDE FORMS EXPLOSIVE CHEMICAL COMPOUNDS WITH LEAD AND COPPER PLUMBING. CARE MUST BE TAKEN TO WASH WASTE DOWN DRAINS WITH LARGE VOLUMES OF WATER.

LD50 oral mouse - 27 mg/kg.

Wash all affected areas with large volumes of water and if swallowed consult your physician immediately.

The above information is believed to be correct but does not purport to be all-inclusive and is intended to be used only as a guide. Bethyl Laboratories, Inc. shall not be liable or responsible in any way for use of either this information or the material supplied. Disposal of hazardous material may be subject to federal, state, or local laws or regulations.