

Menin Antibody (BL342G)

Affinity Purified



Produced in Goat

Catalog No. **Size**
A300-106A 0.1 ml

Conditions

Storage: 2 - 8⁰ C
Antibody Concentration: 1 mg/ml
Physical State: Liquid
Buffer: Tris-citrate/phosphate, pH 7 to 8
Preservative: 0.1% Sodium Azide
Shelf life: 1 year from date of receipt

Production Procedures

Immunogen was a synthetic peptide, which represented a portion of the C-terminus of human Multiple Endocrine Neoplasia I (MEN1, LocusLink ID 4221).

Antibody was affinity purified using the peptide immobilized on solid support.

Antibody concentration was determined by extinction coefficient: absorbance at 280 nm of 1.4 equals 1.0 mg of IgG.

Notes

Centrifuge microtube to remove product from lid.

Alternative Names: MEAI, Multiple Endocrine Adenomatosis 1; ZES, Zollinger-Ellison Syndrome; SCG2, Suppressor Candidate Gene 2.

Reactivity: Human and mouse. Other species have not been tested. Rat is expected based upon sequence identity.

Country of Origin: USA

For In Vitro laboratory use only. Not for any clinical, therapeutic, or diagnostic use in humans or animals. Not for animal or human consumption.

This product may not be resold or modified for resale without the prior written approval of Bethyl Laboratories, Inc.

Applications

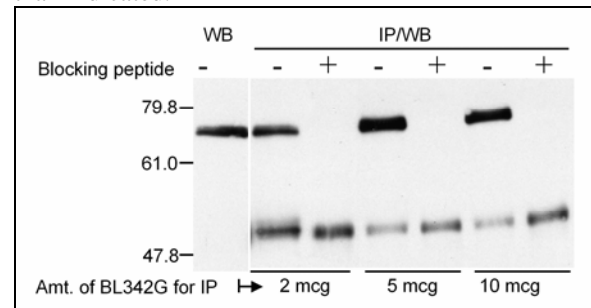
Optimal working dilutions should be determined experimentally by the investigator. Prepare working dilution immediately before use. Suggested starting dilutions are as follows.

Western Blot: 1:1,000 – 1:10,000

Immunoprecipitation: 2 to 10 mcg/mg lysate

Histo/Cytochemistry: BL342G has not performed well in IF.

In some cases, the antibody may be diluted further than indicated.



Detection of Human Menin by Western Blot and Immunoprecipitation. *Samples:* Whole cell lysate (40 mcg for WB; one 10 cm plate 293T cells for IP) from 293T cells. *Antibodies:* Affinity purified goat anti-Menin (BL342G; Cat. No. A300-106A) used as indicated for IP. Menin was detected by Western Blot using affinity purified rabbit anti-Menin (BL342; Cat # A300-105A) at 0.1 mcg/ml. *Detection:* Chemiluminescence exposed for 1 minute.

Related Products

R anti-ASH2 Antibody BL867	A300-107A
R anti-ASH2 Antibody BL765	A300-108A
R anti-ASH2 Antibody BL868	A300-112A
R anti-Menin Antibody BL342	A300-105A
R anti-Menin Antibody BL761	A300-114A
R anti-Menin Antibody BL762	A300-115A
R anti-RbBP5 Antibody BL766	A300-109A
R anti-TRX2 Antibody BL835	A300-113A
R x-Goat IgG-h+I HRP conjugated	A50-100P
R x-Goat IgG-h+I FITC conjugated	A50-100F
Menin Blocking Peptide BP342G	BP300-106

Menin Antibody (BL342G)
Affinity Purified

Produced in Goat

Catalog No. **Size**
A300-106A 0.1 ml



MATERIAL SAFETY DATA SHEET

Contents Description

This product contains goat immunoglobulin G (IgG) protein in Tris-citrate/phosphate buffer, pH 7 to 8 with 0.1% Sodium Azide (NaN_3).

Hazardous Ingredients

Goat IgG Protein - No known toxicity for this biological material.

Sodium Azide (NaN_3) - AZIDE FORMS EXPLOSIVE CHEMICAL COMPOUNDS WITH LEAD AND COPPER PLUMBING. CARE MUST BE TAKEN TO WASH WASTE DOWN DRAINS WITH LARGE VOLUMES OF WATER.

LD50 oral mouse - 27 mg/kg.

Wash all affected areas with large volumes of water and if swallowed consult your physician immediately.

The above information is believed to be correct but does not purport to be all-inclusive and is intended to be used only as a guide. Bethyl Laboratories, Inc. shall not be liable or responsible in any way for use of either this information or the material supplied. Disposal of hazardous material may be subject to federal, state, or local laws or regulations.