

Menin Antibody (BL762) Affinity Purified



Produced in Rabbit

Catalog No. **Size**
A300-115A 0.1 ml

Conditions

Storage: 2 - 8⁰ C
Antibody Concentration: 1 mg/ml
Physical State: Liquid
Buffer: Tris-citrate/phosphate, pH 7 to 8
Preservative: 0.1% Sodium Azide
Shelf life: 1 year from date of receipt

Production Procedures

Immunogen was a synthetic peptide, which represented a portion of human Multiple Endocrine Neoplasia I encoded within exon 11 (MEN1, LocusLink ID 4221).

Antibody was affinity purified using the peptide immobilized on solid support.

Antibody concentration was determined by extinction coefficient: absorbance at 280 nm of 1.4 equals 1.0 mg of IgG.

Notes

Centrifuge microtube to remove product from lid.

Alternative Names: MEAI, Multiple Endocrine Adenomatosis 1; ZES, Zollinger-Ellison Syndrome; SCG2, Suppressor Candidate Gene 2.

Reactivity: Human. Other species have not been tested. Mouse and Rat are expected based upon sequence identity between these orthologs and the peptide used for antibody production.

For In Vitro laboratory use only. Not for any clinical, therapeutic, or diagnostic use in humans or animals. Not for animal or human consumption.

This product may not be resold or modified for resale without the prior written approval of Bethyl Laboratories, Inc.

Applications

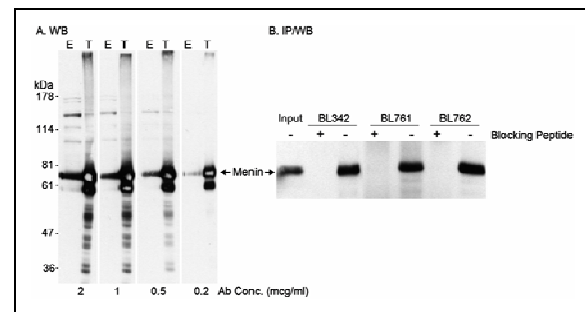
Optimal working dilutions should be determined experimentally by the investigator. Prepare working dilution immediately before use. Suggested starting dilutions are as follows.

Western Blot: 1:500 – 1:5,000.

Immunoprecipitation: 2 to 10 mcg/mg of lysate.

Immunofluorescence: Not Tested.

In some cases, the antibody may be diluted further than indicated.



Detection of Human Menin by Western Blot and Immunoprecipitation.

Samples: A. Whole cell lysate (40 mcg – E; 10 mcg – T) from 293T cells untreated (E) or transfected with a Menin expression construct (T). B. Whole cell lysate from one 10 cm plate of untreated 293T cells.
Antibodies: A. Affinity purified rabbit anti-Menin antibody BL762 (Cat. No. A300-115A) used at the indicated concentrations for WB. B. Affinity purified rabbit anti-Menin antibodies BL342 (Cat. No. A300-105A; 5 mcg/plate), BL761 (Cat. No. A300-114A; 10 mcg/plate) and BL762 (A300-115A; 10 mcg/plate) for IP. Immunoprecipitated Menin was detected using BL342 at 0.1 mcg/ml. **Detection:** Chemiluminescence with exposure times of 1 minute (A) or 1 second (B).

Menin Antibody (BL762)
Affinity Purified

Produced in Rabbit

Catalog No. **Size**
A300-115A 0.1 ml



Related Products

R anti-ASH2 Antibody BL867	A300-107A
R anti-ASH2 Antibody BL765	A300-108A
R anti-ASH2 Antibody BL868	A300-112A
R anti-Menin Antibody BL342	A300-105A
G anti-Menin Antibody BL342G	A300-106A
R anti-Menin Antibody BL761	A300-114A
R anti-RbBP5 Antibody BL766	A300-109A
R anti-TRX2 Antibody BL835	A300-113A
G x-Rabbit IgG-h+1 HRP conjugated	A120-101P
G x-Rabbit IgG-h+1 FITC conjugated	A120-101F
Menin Blocking Peptide BP762	BP300-115

R = Rabbit

G = Goat

Menin Antibody (BL762)
Affinity Purified

Produced in Rabbit

Catalog No. **Size**
A300-115A 0.1 ml



MATERIAL SAFETY DATA SHEET

Contents Description

This product contains rabbit immunoglobulin G (IgG) protein in Tris-citrate/phosphate buffer, pH 7 to 8 with 0.1% Sodium Azide (NaN_3).

Hazardous Ingredients

Rabbit IgG Protein - No known toxicity for this biological material.

Sodium Azide (NaN_3) - AZIDE FORMS EXPLOSIVE CHEMICAL COMPOUNDS WITH LEAD AND COPPER PLUMBING. CARE MUST BE TAKEN TO WASH WASTE DOWN DRAINS WITH LARGE VOLUMES OF WATER.

LD50 oral mouse - 27 mg/kg.

Wash all affected areas with large volumes of water and if swallowed consult your physician immediately.

The above information is believed to be correct but does not purport to be all-inclusive and is intended to be used only as a guide. Bethyl Laboratories, Inc. shall not be liable or responsible in any way for use of either this information or the material supplied. Disposal of hazardous material may be subject to federal, state, or local laws or regulations.