

# Parafibromin Antibody (BL648)

## Affinity Purified



Produced in Rabbit

**Catalog No.**    **Size**  
A300-170A    0.1 ml

### Conditions

Storage: 2 - 8<sup>o</sup>C

Antibody Concentration: 1 mg/ml

Physical State: Liquid

Buffer: Tris-citrate/phosphate, pH 7 to 8

Preservative: 0.09% Sodium Azide

Shelf life: 1 year from date of receipt

### Production Procedures

Antibody was affinity purified using an epitope specific to Parafibromin immobilized on solid support.

The epitope recognized by A300-170A maps to a region between residues 250 and 300 of human Parafibromin using the numbering given in TrEMBL entry Q6P1J9 (GeneID 79577).

Antibody concentration was determined by extinction coefficient: absorbance at 280 nm of 1.4 equals 1.0 mg of IgG.

### Notes

Centrifuge tube to remove product from lid.

Reactivity: Human. Other species have not been tested. Reactivity with mouse Parafibromin is expected owing to complete identity between this ortholog and human Parafibromin at the site to which the epitope maps.

Alternative Names: Parafibromin, HRPT2, HRPT-2, Hyperparathyroidism 2, C1orf28, Chromosome 1 open reading frame 28, HPT-JT, Hyperparathyroidism with Jaw Tumor.

Country of Origin: USA

For In vitro laboratory use only. Not for any clinical, therapeutic, or diagnostic use in humans or animals. Not for animal or human consumption.

**This product may not be resold or modified for resale without the prior written approval of Bethyl Laboratories, Inc.**

### Applications

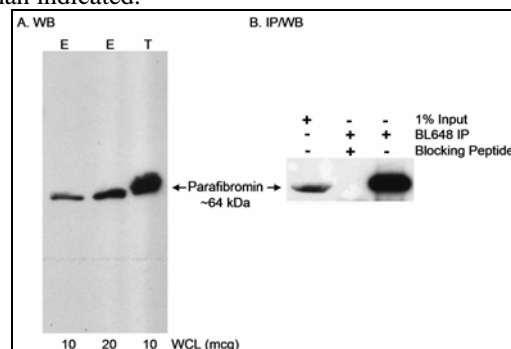
Optimal working dilutions should be determined experimentally by the investigator. Prepare working dilution immediately before use. Suggested starting dilutions are as follows.

Western Blot: 1:5,000 – 1:20,000

Immunoprecipitation: 1 to 4 mcg/mg lysate

Histo/Cytochemistry: not tested

In some cases, the antibody may be diluted further than indicated.



**Detection of Human Parafibromin by Western Blot and Immunoprecipitation.** *Samples:* A. Whole cell lysate (WCL; 10 or 20 mcg) from control 293T cells (E) or 293T cells transfected with a parafibromin expression construct (T). B. Whole cell lysate (10mg) from 293T cells. *Antibody:* Affinity purified rabbit anti-parafibromin antibody BL648 (Cat. No. A300-170A) used at 0.1 mcg/ml (A) or 0.2 mcg/ml (B) for Western Blot. In B, Parafibromin was immunoprecipitated by using BL648 at 3 mcg/10mg with or without blocking peptide. *Detection:* Chemiluminescence with an exposure time of 5 minutes.

### Product Reference

Rozenblatt-Rosen, et al., *Mol and Cell Biol* 25 (2) 612-620, 2005.

**Parafibromin Antibody (BL648)**  
*Affinity Purified*

*Produced in Rabbit*

**Catalog No.**    **Size**  
A300-170A    0.1 ml



**Related Products**

R anti-Parafibromin Antibody (BL649)	A300-171A
R anti-Paf1 Antibody (BL673)	A300-172A
R anti-Paf1 Antibody (BL674)	A300-173A
R anti-Leo1 Antibody (BL676)	A300-174A
R anti-Leo1 Antibody (BL677)	A300-175A
R anti-Rtf1 Antibody (BL680)	A300-178A
R anti-Rtf1 Antibody (BL681)	A300-179A
R anti-RbBP5 Antibody (BL766)	A300-109A
R anti-ASH2 Antibody BL867	A300-107A
R anti-ASH2 Antibody BL765	A300-108A
R anti-ASH2 Antibody BL868	A300-112A
G anti-Rabbit IgG-h+l FITC conjugated	A120-101F
G anti-Rabbit IgG-h+l HRP conjugated	A120-101P
Parafibromin Blocking Peptide BP648	BP300-170

**Parafibromin Antibody (BL648)**  
*Affinity Purified*

*Produced in Rabbit*

**Catalog No.**    **Size**  
A300-170A    0.1 ml



---

## MATERIAL SAFETY DATA SHEET

### Contents Description

This product contains rabbit immunoglobulin G (IgG) protein in Tris-citrate/phosphate buffer, pH 7 to 8 with 0.1% Sodium Azide (NaN<sub>3</sub>).

### Hazardous Ingredients

Rabbit IgG Protein - No known toxicity for this biological material.

Sodium Azide (NaN<sub>3</sub>) - AZIDE FORMS EXPLOSIVE CHEMICAL COMPOUNDS WITH LEAD AND COPPER PLUMBING. CARE MUST BE TAKEN TO WASH WASTE DOWN DRAINS WITH LARGE VOLUMES OF WATER.

LD50 oral mouse - 27 mg/kg.

Wash all affected areas with large volumes of water and if swallowed consult your physician immediately.

The above information is believed to be correct but does not purport to be all-inclusive and is intended to be used only as a guide. Bethyl Laboratories, Inc. shall not be liable or responsible in any way for use of either this information or the material supplied. Disposal of hazardous material may be subject to federal, state, or local laws or regulations.