

# Chk1 Antibody (BL235)

## Affinity Purified



Produced in Rabbit

**Catalog No.**    **Size**  
A300-298A    0.1 ml

### Conditions

Storage: 2 - 8<sup>0</sup> C  
Antibody Concentration: 1 mg/ml  
Physical State: Liquid  
Buffer: Tris-citrate/phosphate, pH 7 to 8  
Preservative: 0.09% Sodium Azide  
Shelf life: 1 year from date of receipt

### Production Procedures

Antibody was affinity purified using an epitope specific to Chk1 immobilized on solid support.

The epitope recognized by A300-298A maps to a region between residues 250 and 300 of human Checkpoint Kinase 1 using the numbering given in SwissProt entry O14757 (GeneID 1111).

Antibody concentration was determined by extinction coefficient: absorbance at 280 nm of 1.4 equals 1.0 mg of IgG.

### Notes

Centrifuge tube to remove product from lid.  
Reactivity: Human. Other species have not been tested.  
Alternative Names: Chk1, Chk-1, Chk1, Checkpoint Kinase 1.  
Country of Origin: USA

For In vitro laboratory use only. Not for any clinical, therapeutic, or diagnostic use in humans or animals. Not for animal or human consumption.

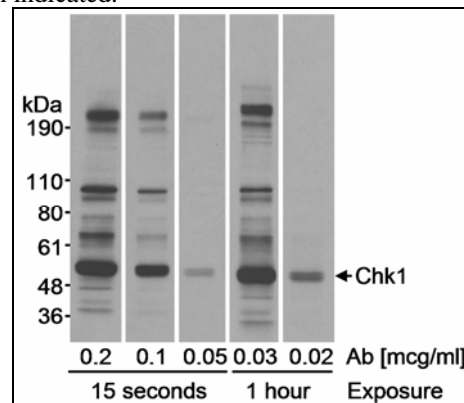
**This product may not be resold or modified for resale without the prior written approval of Bethyl Laboratories, Inc.**

### Applications

Optimal working dilutions should be determined experimentally by the investigator. Prepare working dilution immediately before use. Suggested starting dilutions are as follows.

Western Blot: 1:10,000 – 1:25,000  
Immunoprecipitation: 1 to 3 mcg/mg lysate  
Histo/Cytochemistry: not tested

In some cases, the antibody may be diluted further than indicated.



**Detection of Human Chk1 by Western Blot.**  
*Samples:* Whole cell lysate (20 mcg) from HeLa cells.  
*Antibody:* Affinity purified rabbit anti-Chk1 antibody BL235 (Cat. No. A300-298A) used at the indicated concentrations. *Detection:* Chemiluminescence with exposure times of 15 seconds and 1 hour.

### Related Products

|                                       |           |
|---------------------------------------|-----------|
| G anti-Chk1 Antibody (BL234G)         | A300-161A |
| G anti-Chk1 Antibody (BL235G)         | A300-162A |
| R anti-Chk1 pSer 317 Antibody         | A300-163A |
| G anti-Rabbit IgG-h+l FITC conjugated | A120-101F |
| G anti-Rabbit IgG-h+l HRP conjugated  | A120-101P |
| Chk1 Blocking Peptide BP235           | BP300-298 |

**Chk1 Antibody (BL235)**  
*Affinity Purified*

*Produced in Rabbit*

|                    |             |
|--------------------|-------------|
| <b>Catalog No.</b> | <b>Size</b> |
| A300-298A          | 0.1 ml      |



---

## MATERIAL SAFETY DATA SHEET

### Contents Description

This product contains rabbit immunoglobulin G (IgG) protein in Tris-citrate/phosphate buffer, pH 7 to 8 with 0.1% Sodium Azide ( $\text{NaN}_3$ ).

### Hazardous Ingredients

Rabbit IgG Protein - No known toxicity for this biological material.

Sodium Azide ( $\text{NaN}_3$ ) - AZIDE FORMS EXPLOSIVE CHEMICAL COMPOUNDS WITH LEAD AND COPPER PLUMBING. CARE MUST BE TAKEN TO WASH WASTE DOWN DRAINS WITH LARGE VOLUMES OF WATER.

LD50 oral mouse - 27 mg/kg.

Wash all affected areas with large volumes of water and if swallowed consult your physician immediately.

The above information is believed to be correct but does not purport to be all-inclusive and is intended to be used only as a guide. Bethyl Laboratories, Inc. shall not be liable or responsible in any way for use of either this information or the material supplied. Disposal of hazardous material may be subject to federal, state, or local laws or regulations.