

# DBC1/p30 DBC Antibody (BL1924) Affinity Purified



Produced in Rabbit

**Catalog No.**    **Size**  
A300-434A    0.1 ml

## Conditions

Storage: 2 - 8<sup>0</sup> C

Antibody Concentration: 1 mg/ml

Physical State: Liquid

Buffer: Tris-citrate/phosphate, pH 7 to 8

Preservative: 0.09% Sodium Azide

Shelf life: 1 year from date of receipt

## Production Procedures

Antibody was affinity purified using an epitope specific to DBC1 immobilized on solid support.

The epitope recognized by A300-433A maps to a region between residue 875 and the C-terminus (residue 923) of human Deleted in Breast Cancer 1 using the numbering given in TrEMBL entry Q6P0Q9 (GeneID 57805).

Antibody concentration was determined by extinction coefficient: absorbance at 280 nm of 1.4 equals 1.0 mg of IgG.

## Notes

Centrifuge tube to remove product from lid.

Reactivity: Human. Other species have not been tested. Reactivity with mouse DBC1 is likely owing to a high degree of conservation of sequence between this ortholog and human DBC1 at the site to which the epitope maps.

Alternative Names: DBC1, DBC-1, Deleted in Breast Cancer 1, p30 DBC, p30DBC, p30 Deleted in Breast Cancer, KIAA1967.

Country of Origin: USA

For In vitro laboratory use only. Not for any clinical, therapeutic, or diagnostic use in humans or animals. Not for animal or human consumption.

**This product may not be resold or modified for resale without the prior written approval of Bethyl Laboratories, Inc.**

## Applications

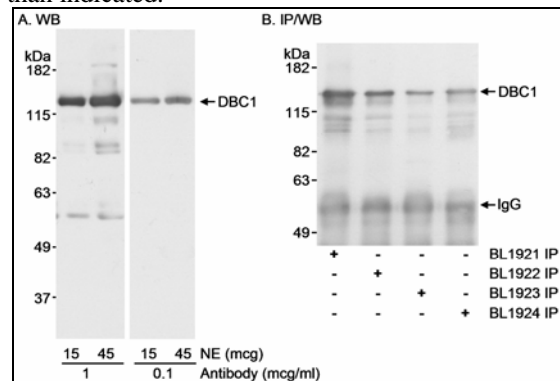
Optimal working dilutions should be determined experimentally by the investigator. Prepare working dilution immediately before use. Suggested starting dilutions are as follows.

Western Blot: 1:1,000 – 1:10,000.

Immunoprecipitation: 1 to 10 mcg/mg lysate.

Histo/Cytochemistry: not tested.

In some cases, the antibody may be diluted further than indicated.



## Detection of Human DBC1 by Western Blot and Immunoprecipitation.

**Samples:** Nuclear extract (NE; 15 and 45 mcg for WB; 100 mcg for IP) from HeLa cells. **Antibodies:** Affinity purified rabbit anti-DBC1 antibody BL1924 (Cat. No. A300-434A) used at 1 and 0.1 mcg/ml for WB (A) and at 1 mcg/100 mcg NE for IP (B). Immunoprecipitation of DBC1 was also performed with rabbit anti-DBC1 antibodies BL1921 (Cat. No. A300-432A), BL1922 and BL1923 (Cat. No. A300-433A). Immunoprecipitated DBC1 was blotted using BL1923 at 1 mcg/ml. **Detection:** Chemiluminescence with exposure times of 5 seconds (A) and 3 seconds (B).

## Related Products

DBC1 Blocking Peptide BP1924	BP300-434
R anti-DBC1 Antibody BL1922	A300-432A
R anti-DBC1 Antibody BL1923	A300-433A
G anti-Rabbit IgG-h+l FITC conjugated	A120-101F
G anti-Rabbit IgG-h+l HRP conjugated	A120-101P

**DBC1/p30 DBC Antibody (BL1924)**  
*Affinity Purified*

*Produced in Rabbit*

<b>Catalog No.</b>	<b>Size</b>
A300-434A	0.1 ml



---

## MATERIAL SAFETY DATA SHEET

### Contents Description

This product contains rabbit immunoglobulin G (IgG) protein in Tris-citrate/phosphate buffer, pH 7 to 8 with 0.1% Sodium Azide ( $\text{NaN}_3$ ).

### Hazardous Ingredients

Rabbit IgG Protein - No known toxicity for this biological material.

Sodium Azide ( $\text{NaN}_3$ ) - AZIDE FORMS EXPLOSIVE CHEMICAL COMPOUNDS WITH LEAD AND COPPER PLUMBING. CARE MUST BE TAKEN TO WASH WASTE DOWN DRAINS WITH LARGE VOLUMES OF WATER.

LD50 oral mouse - 27 mg/kg.

Wash all affected areas with large volumes of water and if swallowed consult your physician immediately.

The above information is believed to be correct but does not purport to be all-inclusive and is intended to be used only as a guide. Bethyl Laboratories, Inc. shall not be liable or responsible in any way for use of either this information or the material supplied. Disposal of hazardous material may be subject to federal, state, or local laws or regulations.