

XRN1/SEP1 Antibody (BL2045)

Affinity Purified



Produced in Rabbit

Catalog No. **Size**
A300-443A 0.1 ml

Conditions

Storage: 2 - 8⁰ C

Antibody Concentration: 1 mg/ml

Physical State: Liquid

Buffer: Tris-citrate/phosphate, pH 7 to 8

Preservative: 0.09% Sodium Azide

Shelf life: 1 year from date of receipt

Production Procedures

Antibody was affinity purified using an epitope specific to XRN1 immobilized on solid support.

The epitope recognized by A300-443A maps to a region between residue 1650 and the C-terminus (residue 1706) of human 5'-3' Exoribonuclease 1 using the numbering given in TrEMBL entry Q6MZS8 (GeneID 54464).

Antibody concentration was determined by extinction coefficient: absorbance at 280 nm of 1.4 equals 1.0 mg of IgG.

Notes

Centrifuge tube to remove product from lid.

Reactivity: Human. Other species have not been tested. Reactivity with mouse XRN1 is expected owing to identity of sequence between this ortholog and human XRN1 at the site to which the epitope maps.

Alternative Names: XRN1, XRN-1, 5'-3' Exoribonuclease 1, SEP1, SEP-1, Strand Exchange Protein 1.

Country of Origin: USA

For In vitro laboratory use only. Not for any clinical, therapeutic, or diagnostic use in humans or animals. Not for animal or human consumption.

This product may not be resold or modified for resale without the prior written approval of Bethyl Laboratories, Inc.

Applications

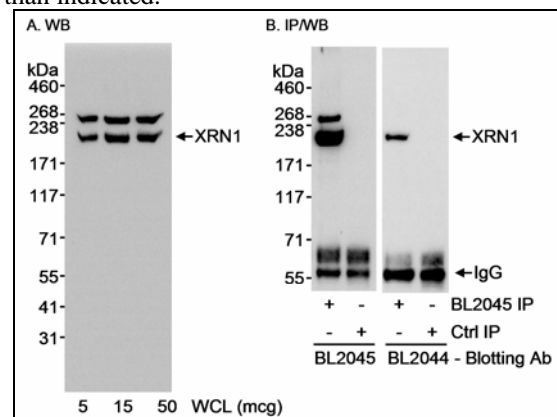
Optimal working dilutions should be determined experimentally by the investigator. Prepare working dilution immediately before use. Suggested starting dilutions are as follows.

Western Blot: 1:5,000 – 1:15,000.

Immunoprecipitation: 2 to 5 mcg/mg lysate.

Histo/Cytochemistry: not tested.

In some cases, the antibody may be diluted further than indicated.



Detection of Human XRN1 by Western Blot and Immunoprecipitation. *Samples:* Whole cell lysate (5, 15 and 15 mcg for WB; 1 mg for IP) from HeLa cells. *Antibodies:* Affinity purified rabbit anti-XRN1 antibody BL2045 (A300-443A) used at 0.1 mcg/ml for Western Blot and at 3 mcg/mg lysate for IP. XRN1 that was immunoprecipitated by BL2045 was also blotted with a different affinity purified antibody (BL2044; 1 mcg/ml) to an upstream region of XRN1. Immunoprecipitation reactions were controlled using normal rabbit IgG (Ctrl IP). *Detection:* Chemiluminescence with an exposure time of 10 seconds.

Related Products

G anti-Rabbit IgG-h+l FITC conjugated A120-101F
G anti-Rabbit IgG-h+l HRP conjugated A120-101P

XRN1/SEP1 Antibody (BL2045)

Affinity Purified

Produced in Rabbit

Catalog No.	Size
A300-443A	0.1 ml



MATERIAL SAFETY DATA SHEET

Contents Description

This product contains rabbit immunoglobulin G (IgG) protein in Tris-citrate/phosphate buffer, pH 7 to 8 with 0.1% Sodium Azide (NaN_3).

Hazardous Ingredients

Rabbit IgG Protein - No known toxicity for this biological material.

Sodium Azide (NaN_3) - AZIDE FORMS EXPLOSIVE CHEMICAL COMPOUNDS WITH LEAD AND COPPER PLUMBING. CARE MUST BE TAKEN TO WASH WASTE DOWN DRAINS WITH LARGE VOLUMES OF WATER.

LD50 oral mouse - 27 mg/kg.

Wash all affected areas with large volumes of water and if swallowed consult your physician immediately.

The above information is believed to be correct but does not purport to be all-inclusive and is intended to be used only as a guide. Bethyl Laboratories, Inc. shall not be liable or responsible in any way for use of either this information or the material supplied. Disposal of hazardous material may be subject to federal, state, or local laws or regulations.