

Rho Kinase Beta Antibody (BL2136) Affinity Purified



Produced in Rabbit

Catalog No. **Size**
A300-455A 0.1 ml

Conditions

Storage: 2 - 8⁰ C
Antibody Concentration: 1 mg/ml
Physical State: Liquid
Buffer: Tris-citrate/phosphate, pH 7 to 8
Preservative: 0.09% Sodium Azide
Shelf life: 1 year from date of receipt

Production Procedures

Antibody was affinity purified using an epitope specific to Rho Kinase Beta immobilized on solid support.

The epitope recognized by A300-455A maps to a region between residues 400 and 450 of human Rho-associated, coiled-coil containing protein kinase 1 using the numbering given in Swiss-Prot entry Q13464 (GeneID 6093).

Antibody concentration was determined by extinction coefficient: absorbance at 280 nm of 1.4 equals 1.0 mg of IgG.

Notes

Centrifuge tube to remove product from lid.

Reactivity: Human. Other species have not been tested. Reactivity with mouse Rho Kinase Beta is possible owing to conservation of sequence between this ortholog and human Rho Kinase Beta at the site to which the epitope maps.

Alternative Names: ROK β , ROK-beta, Rho-Kinase Beta, p160ROCK, ROCK1, ROCK-1, ROCKI, ROCK-I, Rho-Kinase 1.

Country of Origin: USA

For In vitro laboratory use only. Not for any clinical, therapeutic, or diagnostic use in humans or animals. Not for animal or human consumption.

This product may not be resold or modified for resale without the prior written approval of Bethyl Laboratories, Inc.

Applications

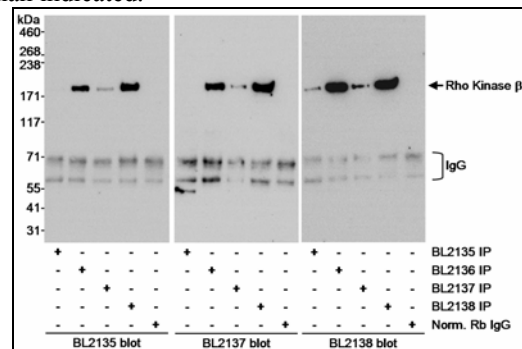
Optimal working dilutions should be determined experimentally by the investigator. Prepare working dilution immediately before use. Suggested starting dilutions are as follows.

Western Blot: BL2136 has not performed well in WB. Use BL2137 (A300-456A) or BL2138 (A300-457A).

Immunoprecipitation: 2 to 5 mcg/mg lysate.

Histo/Cytochemistry: not tested.

In some cases, the antibody may be diluted further than indicated.



Detection of Human Rho Kinase Beta (ROCK1/p160ROCK) by Western Blot of Immunoprecipitates. *Samples:* Whole cell lysate (1 mg/IP; 1/4 of IP loaded/lane) from HeLa cells. *Antibodies:* Affinity purified rabbit anti-Rho Kinase Beta antibodies BL2135, BL2136 (Cat. No. A300-455A), BL2137 (Cat. No. A300-456A) and BL2138 (A300-457A) used at 3 mcg/mg lysate for IP. Normal rabbit IgG was used as a control for immunoprecipitation. Rho Kinase Beta was blotted with either BL2135, BL2137, or BL2138 (each at 1 mcg/ml). *Detection:* Chemiluminescence with exposure times of 10 to 30 seconds.

Related Products

Rho Kinase Beta Blocking Peptide BP2136	BP300-455
R anti-Rho Kinase Beta Antibody BL2137	A300-456A
R anti-Rho Kinase Beta Antibody BL2138	A300-457A
R anti-Rho Kinase Alpha Antibody BL963	A300-046A
R anti-Rho Kinase Alpha Antibody BL964	A300-047A
G anti-Rabbit IgG-h+I FITC conjugated	A120-101F
G anti-Rabbit IgG-h+I HRP conjugated	A120-101P

Rho Kinase Beta Antibody (BL2136)
Affinity Purified

Produced in Rabbit

Catalog No. **Size**
A300-455A 0.1 ml



MATERIAL SAFETY DATA SHEET

Contents Description

This product contains rabbit immunoglobulin G (IgG) protein in Tris-citrate/phosphate buffer, pH 7 to 8 with 0.1% Sodium Azide (NaN_3).

Hazardous Ingredients

Rabbit IgG Protein - No known toxicity for this biological material.

Sodium Azide (NaN_3) - AZIDE FORMS EXPLOSIVE CHEMICAL COMPOUNDS WITH LEAD AND COPPER PLUMBING. CARE MUST BE TAKEN TO WASH WASTE DOWN DRAINS WITH LARGE VOLUMES OF WATER.

LD50 oral mouse - 27 mg/kg.

Wash all affected areas with large volumes of water and if swallowed consult your physician immediately.

The above information is believed to be correct but does not purport to be all-inclusive and is intended to be used only as a guide. Bethyl Laboratories, Inc. shall not be liable or responsible in any way for use of either this information or the material supplied. Disposal of hazardous material may be subject to federal, state, or local laws or regulations.