

# LATS1 (WARTS) Antibody (BL2212) Affinity Purified



Produced in Rabbit

**Catalog No.**    **Size**  
A300-478A    0.1 ml

## Conditions

Storage: 2 - 8<sup>0</sup> C

Antibody Concentration: 1 mg/ml

Physical State: Liquid

Buffer: Tris-citrate/phosphate, pH 7 to 8

Preservative: 0.09% Sodium Azide

Shelf life: 1 year from date of receipt

## Production Procedures

Antibody was affinity purified using an epitope specific to LATS1 (WARTS) immobilized on solid support.

The epitope recognized by A300-478A maps to a region between residue 1075 and the C-terminus (residue 1130) of human Large Tumor Suppressor homolog 1 using the numbering given in SwissProt entry O95835 (GeneID 9113).

Antibody concentration was determined by extinction coefficient: absorbance at 280 nm of 1.4 equals 1.0 mg of IgG.

## Notes

Centrifuge tube to remove product from lid.

Reactivity: Human. Other species have not been tested.

Alternative Names: LATS1, LATS-1, Large Tumor Suppressor 1, WTS, WARTS.

Country of Origin: USA

For In vitro laboratory use only. Not for any clinical, therapeutic, or diagnostic use in humans or animals. Not for animal or human consumption.

**This product may not be resold or modified for resale without the prior written approval of Bethyl Laboratories, Inc.**

## Applications

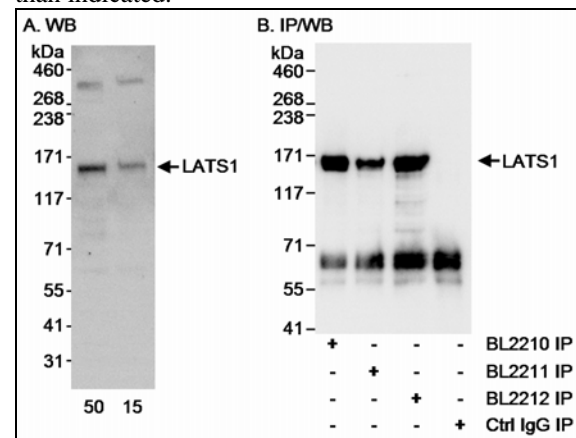
Optimal working dilutions should be determined experimentally by the investigator. Prepare working dilution immediately before use. Suggested starting dilutions are as follows.

Western Blot: 1:1,000 – 1:10,000.

Immunoprecipitation: 2 to 5 mcg/mg lysate.

Histo/Cytochemistry: not tested.

In some cases, the antibody may be diluted further than indicated.



## Detection of Human LATS1 by Western Blot and Immunoprecipitation.

*Samples:* Whole cell lysate (15 and 50 mcg for WB; 1 mg for IP, 1/4 of IP loaded/lane) from HeLa Cells.

*Antibodies:* Affinity purified rabbit anti-LATS1 antibody BL2212 (Cat. No. A300-478A) used at 0.4 mcg/ml (A and B) for WB and at 3 mcg/mg lysate for IP (B). LATS1 was also immunoprecipitated with LATS1 antibodies BL2210 (Cat. No. A300-477A) and BL2211 using 3 mcg/mg lysate. *Detection:* Chemiluminescence with an exposure time of 10 seconds (A and B).

## Related Products

LATS1 Blocking Peptide BP2212	BP300-478
R anti-LATS1 Antibody BL2210	A300-477A
R anti-LATS2 Antibody BL2213	A300-479A
G anti-Rabbit IgG-h+l FITC conjugated	A120-101F
G anti-Rabbit IgG-h+l HRP conjugated	A120-101P

**LATS1 (WARTS) Antibody (BL2212)**  
*Affinity Purified*

*Produced in Rabbit*

**Catalog No.**    **Size**  
A300-478A      0.1 ml



---

## MATERIAL SAFETY DATA SHEET

### Contents Description

This product contains rabbit immunoglobulin G (IgG) protein in Tris-citrate/phosphate buffer, pH 7 to 8 with 0.1% Sodium Azide ( $\text{NaN}_3$ ).

### Hazardous Ingredients

Rabbit IgG Protein - No known toxicity for this biological material.

Sodium Azide ( $\text{NaN}_3$ ) - AZIDE FORMS EXPLOSIVE CHEMICAL COMPOUNDS WITH LEAD AND COPPER PLUMBING. CARE MUST BE TAKEN TO WASH WASTE DOWN DRAINS WITH LARGE VOLUMES OF WATER.

LD50 oral mouse - 27 mg/kg.

Wash all affected areas with large volumes of water and if swallowed consult your physician immediately.

The above information is believed to be correct but does not purport to be all-inclusive and is intended to be used only as a guide. Bethyl Laboratories, Inc. shall not be liable or responsible in any way for use of either this information or the material supplied. Disposal of hazardous material may be subject to federal, state, or local laws or regulations.