

CRM1 (Exportin 1) Antibody (BL1956) Affinity Purified



Produced in Rabbit

Catalog No. **Size**
A300-490A 0.1 ml

Conditions

Storage: 2 - 8⁰ C

Antibody Concentration: 1 mg/ml

Physical State: Liquid

Buffer: Tris-citrate/phosphate, pH 7 to 8

Preservative: 0.09% Sodium Azide

Shelf life: 1 year from date of receipt

Production Procedures

Antibody was affinity purified using an epitope specific to CRM1 (Exportin 1) immobilized on solid support.

The epitope recognized by A300-490A maps to a region between residues 375 and 425 of human Chromosome Region Maintenance 1 (Exportin 1) using the numbering given in entry NP_003391.1 (GeneID 7514).

Antibody concentration was determined by extinction coefficient: absorbance at 280 nm of 1.4 equals 1.0 mg of IgG.

Notes

Centrifuge tube to remove product from lid.

Reactivity: Human. Other species have not been tested. Reactivity with mouse and *X. laevis* is expected owing to conservation of sequence at the site to which the epitope maps.

Alternative Names: CRM1, CRM-1, Chromosome Region Maintenance 1, XPO1, Exportin 1.

Country of Origin: USA

For In vitro laboratory use only. Not for any clinical, therapeutic, or diagnostic use in humans or animals. Not for animal or human consumption.

This product may not be resold or modified for resale without the prior written approval of Bethyl Laboratories, Inc.

Applications

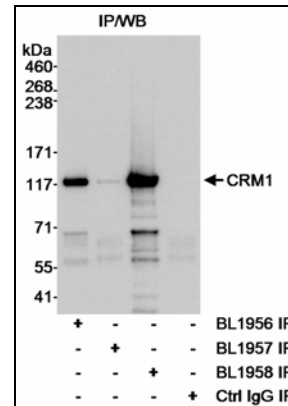
Optimal working dilutions should be determined experimentally by the investigator. Prepare working dilution immediately before use. Suggested starting dilutions are as follows.

Western Blot: A300-490A is not recommended for Western Blotting. Use BL1958 (Cat. No. A300-469A).

Immunoprecipitation: 2 to 5 mcg/mg lysate.

Histo/Cytochemistry: not tested.

In some cases, the antibody may be diluted further than indicated.



Detection of CRM1 (Exportin 1) by Immunoprecipitation. *Samples:* Whole cell lysate (1 mg/IP; ¼ of reaction loaded/lane) from HeLa cells. *Antibodies:* Affinity purified rabbit anti-CRM1 antibody BL1956 (Cat. No. A300-490A) used at 3 mcg/mg lysate for IP. CRM1 was also immunoprecipitated by rabbit anti-CRM1 antibodies BL1958 (Cat. No. A300-469A) and less efficiently by BL1957, which recognize downstream epitopes on CRM1. Immunoprecipitated CRM1 was blotted using BL1958 at 0.1 mcg/ml. *Detection:* Chemiluminescence with an exposure time of 3 seconds.

Related Products

CRM1 Blocking Peptide BP1956	BP300-490
R anti-CRM1 Antibody BL1958	A300-469A
G anti-Rabbit IgG-h+l FITC conjugated	A120-101F
G anti-Rabbit IgG-h+l HRP conjugated	A120-101P

CRM1 (Exportin 1) Antibody (BL1956)
Affinity Purified

Produced in Rabbit

Catalog No.	Size
A300-490A	0.1 ml



MATERIAL SAFETY DATA SHEET

Contents Description

This product contains rabbit immunoglobulin G (IgG) protein in Tris-citrate/phosphate buffer, pH 7 to 8 with 0.1% Sodium Azide (NaN_3).

Hazardous Ingredients

Rabbit IgG Protein - No known toxicity for this biological material.

Sodium Azide (NaN_3) - AZIDE FORMS EXPLOSIVE CHEMICAL COMPOUNDS WITH LEAD AND COPPER PLUMBING. CARE MUST BE TAKEN TO WASH WASTE DOWN DRAINS WITH LARGE VOLUMES OF WATER.

LD50 oral mouse - 27 mg/kg.

Wash all affected areas with large volumes of water and if swallowed consult your physician immediately.

The above information is believed to be correct but does not purport to be all-inclusive and is intended to be used only as a guide. Bethyl Laboratories, Inc. shall not be liable or responsible in any way for use of either this information or the material supplied. Disposal of hazardous material may be subject to federal, state, or local laws or regulations.