

**ErbB2 Antibody (BL3032)**  
**Affinity Purified**

*Produced in Rabbit*

**Catalog No.**  
A300-622A



---

<b>Storage:</b>	2 - 8 <sup>0</sup> C										
<b>Amount:</b>	0.1 ml at 0.2 mg/ml										
<b>Buffer:</b>	Tris-buffered Saline containing 0.1% BSA and 0.09% Sodium Azide										
<b>Shelf life:</b>	1 year from date of receipt										
<b>Production Procedures:</b>	<p>Antibody was affinity purified using an epitope specific to ErbB2 immobilized on solid support.</p> <p>The epitope recognized by A300-622A maps to a region between residues 1200 and 1250 of human v-erb-b2 erythroblastic leukemia viral oncogene homolog 2 using the numbering given in entry NP_004439.2 (GeneID 2064).</p> <p>Antibody concentration was determined by extinction coefficient: absorbance at 280 nm of 1.4 equals 1.0 mg of IgG.</p>										
<b>Alternative Names:</b>	ErbB2, ErbB-2, c-erb B2, v-erb-b2 erythroblastic leukemia viral oncogene homolog 2, HER2, HER-2, Neu, NGL, Neuroblastoma- or Glioblastoma-Derived, TKR1, Tyrosine Kinase-type Cell Surface Receptor Her2.										
<b>Country of Origin:</b>	USA										
<b>Notes:</b>	<p>Centrifuge microtube to remove product from lid.</p> <p>For in vitro laboratory use only. Not for any clinical, therapeutic, or diagnostic use in humans or animals. Not for animal or human consumption.</p> <p><b>This product may not be resold or modified for resale without the prior written approval of Bethyl Laboratories, Inc.</b></p>										
<b>Related Products:</b>	<table><tr><td>ErbB2 Blocking Peptide BP3032</td><td>BP300-622</td></tr><tr><td>R anti-ErbB2 Antibody BL3030</td><td>A300-621A</td></tr><tr><td>R anti-ErbB2 Antibody BL3033</td><td>A300-623A</td></tr><tr><td>R anti-EGFR Antibody BL1585</td><td>A300-387A</td></tr><tr><td>R anti-EGFR Antibody BL1586</td><td>A300-388A</td></tr></table>	ErbB2 Blocking Peptide BP3032	BP300-622	R anti-ErbB2 Antibody BL3030	A300-621A	R anti-ErbB2 Antibody BL3033	A300-623A	R anti-EGFR Antibody BL1585	A300-387A	R anti-EGFR Antibody BL1586	A300-388A
ErbB2 Blocking Peptide BP3032	BP300-622										
R anti-ErbB2 Antibody BL3030	A300-621A										
R anti-ErbB2 Antibody BL3033	A300-623A										
R anti-EGFR Antibody BL1585	A300-387A										
R anti-EGFR Antibody BL1586	A300-388A										

**Cat. No.**  
A300-622A

**Reactivity:** Human. In initial tests of lysate from mouse NIH3T3 cells, mouse ErbB2 was not readily detectable. Other species have not been tested.

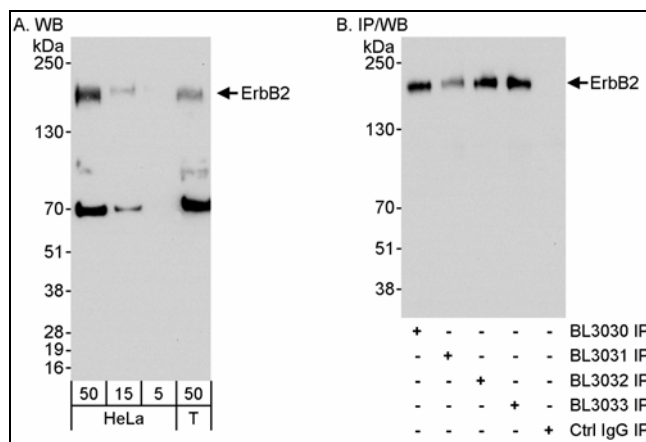
**Applications:** Optimal working dilutions should be determined experimentally by the investigator. Prepare working dilution immediately before use. Suggested starting dilutions are as follows.

Western Blot: 1:2,000 – 1:10,000

Immunoprecipitation: 1 to 4 mcg/mg of lysate

IHC/ICC/IF: not tested

In some cases, the antibody may be diluted further than indicated.



**Detection of Human ErbB2 by Western Blot and Immunoprecipitation.** *Samples:* Whole cell lysate from HeLa (5, 15 and 50 mcg for WB; 1 mg for IP, 20% of IP loaded) and 293T (T; 50 mcg for WB) cells. *Antibodies:* Affinity purified rabbit anti-ErbB2 antibody BL3032 (Cat. No. A300-622A) used for WB at 1 mcg/ml (A) and 0.04 mcg/ml (B) and used for IP at 3 mcg/mg lysate. ErbB2 was also immunoprecipitated using rabbit anti-ErbB2 antibodies BL3030 (Cat. No. A300-621A), BL3031 and BL3033 (Cat. No. A300-623A) at 3 mcg/mg lysate. For blotting immunoprecipitated ErbB2, ReliaBLOT™ Reagents and Procedures were used. *Detection:* Chemiluminescence with exposure times of 10 seconds (A and B).

**ErbB2 Antibody (BL3032)**  
***Affinity Purified***

*Produced in Rabbit*

**Catalog No.**  
A300-622A



---

## **MATERIAL SAFETY DATA SHEET**

### **Contents Description**

This product contains rabbit immunoglobulin G (IgG) protein in Tris-buffered Saline containing 0.1 % BSA and 0.09% Sodium Azide.

### **Hazardous Ingredients**

Rabbit IgG Protein - No known toxicity for this biological material.

Bovine Serum Albumin (BSA) - No known toxicity for this biological material.

Sodium Azide ( $\text{NaN}_3$ ) - AZIDE FORMS EXPLOSIVE CHEMICAL COMPOUNDS WITH LEAD AND COPPER PLUMBING. CARE MUST BE TAKEN TO WASH WASTE DOWN DRAINS WITH LARGE VOLUMES OF WATER.

LD50 oral mouse - 27 mg/kg.

Wash all affected areas with large volumes of water and if swallowed consult your physician immediately.

The above information is believed to be correct but does not purport to be all-inclusive and is intended to be used only as a guide. Bethyl Laboratories, Inc. shall not be liable or responsible in any way for use of either this information or the material supplied. Disposal of hazardous material may be subject to federal, state, or local laws or regulations.