

# Nucleolin (NCL) Antibody (BL3213)

*Affinity Purified*

*Produced in Rabbit*

**Catalog No.**

A300-709A



**Storage:** 2-8° C

**Amount:** 0.1 ml at 0.2 mg/ml

**Buffer:** Tris-buffered Saline containing 0.1% BSA with 0.09% Sodium Azide

**Shelf Life:** 1 year from date of receipt

**Production Procedures:** Antibody was affinity purified using an epitope specific to Nucleolin (NCL) immobilized on solid support.

The epitope recognized by A300-709A maps to a region between residue 250 and 300 of human Nucleolin using the numbering given in entry NP\_005372.2 (GeneID 4691).

Antibody concentration was determined by extinction coefficient: absorbance at 280 nm of 1.4 equals 1.0 mg of IgG.

**Alternate Names:** NCL, Nucleolin, C23

**Country of Origin:** USA

**Notes:** Centrifuge tube to remove product from lid.

For In vitro laboratory use only. Not for any clinical, therapeutic, or diagnostic use in humans or animals. Not for animal or human consumption.

**This product may not be resold or modified for resale without the prior written approval of Bethyl Laboratories, Inc.**

<b>Related Products:</b>	Rabbit anti-RPL26 Antibody (BL3208), Affinity Purified	A300-685A
	Rabbit anti-RPL26 Antibody (BL3211), Affinity Purified	A300-686A
	Rabbit anti-Nucleolin (NCL) Antibody (BL3214), Affinity Purified	A300-710A
	Rabbit anti-Nucleolin (NCL) Antibody (BL3215), Affinity Purified	A300-711A
	Nucleolin (NCL) Blocking Peptide (BP3213)	BP300-709

## Catalog No.

A300-709A

**Reactivity:** Human. Initial blots performed on lysate from NIH3T3 cells failed to provide evidence that this antibody reacts with the mouse ortholog. Other species have not been tested.

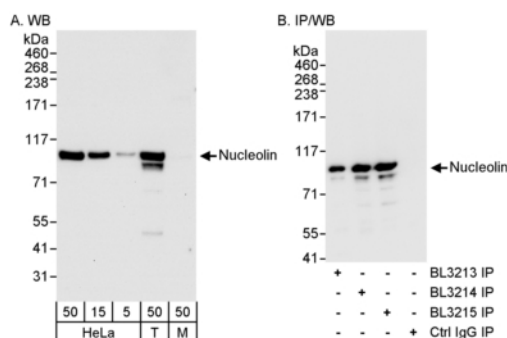
**Applications:** Optimal working dilutions should be determined experimentally by the investigator. Prepare working dilution immediately before use. Suggested starting dilutions are as follows:

Western Blot: 1:2,000 to 1:10,000

Immunoprecipitation: 2 to 5 mcg/mg lysate

Immunohistochemistry: not tested

Immunocytochemistry: not tested



**Detection of Human Nucleolin by WB and Immunoprecipitation.**

**Samples:** Whole cell lysate from HeLa (5, 15 and 50 mcg for WB; 1 mg for IP, 20% of IP loaded), 293T (T; 50 mcg), and mouse NIH3T3 (M; 50 mcg) cells. **Antibodies:** Affinity purified rabbit anti-Nucleolin antibody BL3213 (Cat. No. A300-709A) used for WB at 0.02 mcg/ml (A) and 1 mcg/ml (B) and used for IP at 3 mcg/mg lysate (B). Nucleolin was also immunoprecipitated using rabbit anti-Nucleolin antibodies BL3214 (Cat. No. A300-710A) and BL3215 (Cat. No. A300-711A). For blotting immunoprecipitated Nucleolin, ReliaBLOT™ Reagents and Procedures (Cat. No. WB120) were used. **Detection:** Chemiluminescence with exposure times of 30 seconds (A) and 3 seconds (B).

**Catalog No.**

A300-709A

---

## **MATERIAL SAFETY DATA SHEET**

### **Contents Description**

This product contains Rabbit immunoglobulin G (IgG) protein in Tris-buffered Saline containing 0.1% BSA with 0.09% Sodium Azide.

### **Hazardous Ingredients**

Rabbit IgG Protein - No known toxicity for this biological material.

Sodium Azide ( $\text{NaN}_3$ ) - AZIDE FORMS EXPLOSIVE CHEMICAL COMPOUNDS WITH LEAD AND COPPER PLUMBING. CARE MUST BE TAKEN TO WASH WASTE DOWN DRAINS WITH LARGE VOLUMES OF WATER. LD50 oral mouse - 27 mg/kg.

Wash all affected areas with large volumes of water and if swallowed consult your physician immediately.

The above information is believed to be correct but does not purport to be all-inclusive and is intended to be used only as a guide. Bethyl Laboratories, Inc. shall not be liable or responsible in any way for use of either this information or the material supplied. Disposal of hazardous material may be subject to federal, state, or local laws or regulations.