

NIF1 Antibody (BL2737)

Affinity Purified

Produced in Rabbit

Catalog No.

A300-797A



Storage: 2-8° C

Amount: 0.1 ml at 1 mg/ml

Buffer: Tris-citrate/phosphate buffer, pH 7 to 8 containing 0.09% Sodium Azide

Shelf Life: 1 year from date of receipt

Production Procedures: Antibody was affinity purified using an epitope specific to NIF1 immobilized on solid support.

The epitope recognized by A300-797A maps to a region between residue 300 and 350 of human NRC-Interacting Factor 1 using the numbering given in entry NP_071378.1 (GeneID 63925).

Antibody concentration was determined by extinction coefficient: absorbance at 280 nm of 1.4 equals 1.0 mg of IgG.

Alternate Names: NIF1, NIF-1, Nuclear Receptor Coactivator-Interacting Factor 1, ZNF335, Zinc Finger 335.

Country of Origin: USA

Notes: Centrifuge tube to remove product from lid.

For In vitro laboratory use only. Not for any clinical, therapeutic, or diagnostic use in humans or animals. Not for animal or human consumption.

This product may not be resold or modified for resale without the prior written approval of Bethyl Laboratories, Inc.

Related Products:	Rabbit anti-NIF1 Antibody (BL2739), Affinity Purified	A300-798A
	NIF1 Antibody AbVantage Pack	A310-248A
	NIF1 Blocking Peptide (BP2737)	BP300-797

Catalog No.

A300-797A

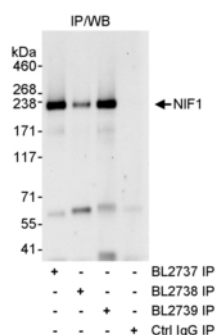
Reactivity: Human. Other species have not been tested.**Applications:** Optimal working dilutions should be determined experimentally by the investigator. Prepare working dilution immediately before use. Suggested starting dilutions are as follows:

Western Blot: Not recommended. Use rabbit anti-NIF1 Antibody BL2739 (Cat. No. A300-798A).

Immunoprecipitation: 2 to 5 mcg/mg lysate.

Immunohistochemistry: Not tested.

Immunocytochemistry: Not tested.



Detection of Human NIF1 by Western Blot of Immunoprecipitates. *Samples:* Whole cell lysate (1 mg for IP, 20% of IP loaded) from HeLa cells. *Antibodies:* Affinity purified rabbit anti-NIF1 antibody BL2737 (Cat. No. A300-797A) used IP at 3 mcg/mg lysate. NIF1 was also immunoprecipitated by rabbit anti-NIF1 antibodies BL2738 and BL2739 (Cat. No. A300-798A). For blotting immunoprecipitated NIF1, BL2739 was used at 1 mcg/ml and the ReliaBLOT™ Reagents and Procedures (Cat. No. WB120) were incorporated. *Detection:* Chemiluminescence with an exposure time of 30 seconds.

Catalog No.

A300-797A

MATERIAL SAFETY DATA SHEET

Contents Description

This product contains Rabbit immunoglobulin G (IgG) protein in Tris-citrate/phosphate buffer, pH 7 to 8 containing 0.09% Sodium Azide.

Hazardous Ingredients

Rabbit IgG Protein - No known toxicity for this biological material.

Sodium Azide (NaN_3) - AZIDE FORMS EXPLOSIVE CHEMICAL COMPOUNDS WITH LEAD AND COPPER PLUMBING. CARE MUST BE TAKEN TO WASH WASTE DOWN DRAINS WITH LARGE VOLUMES OF WATER. LD50 oral mouse - 27 mg/kg.

Wash all affected areas with large volumes of water and if swallowed consult your physician immediately.

The above information is believed to be correct but does not purport to be all-inclusive and is intended to be used only as a guide. Bethyl Laboratories, Inc. shall not be liable or responsible in any way for use of either this information or the material supplied. Disposal of hazardous material may be subject to federal, state, or local laws or regulations.