

# NIF1 Antibody (BL2739)

*Affinity Purified*

*Produced in Rabbit*

## Catalog No.

A300-798A



---

<b>Storage:</b>	2-8° C
<b>Amount:</b>	0.1 ml at 0.2 mg/ml
<b>Buffer:</b>	Tris-buffered Saline containing 0.1% BSA with 0.09% Sodium Azide
<b>Shelf Life:</b>	1 year from date of receipt
<b>Production Procedures:</b>	Antibody was affinity purified using an epitope specific to NIF1 immobilized on solid support.  The epitope recognized by A300-798A maps to a region between residue 1300 and the C-terminus (residue 1342) of human NRC-Interacting Factor 1 using the numbering given in entry NP_071378.1 (GeneID 63925).  Antibody concentration was determined by extinction coefficient: absorbance at 280 nm of 1.4 equals 1.0 mg of IgG.
<b>Alternate Names:</b>	NIF1, NIF-1, Nuclear Receptor Coactivator-Interacting Factor 1, ZNF335, Zinc Finger 335.
<b>Country of Origin:</b>	USA
<b>Notes:</b>	Centrifuge tube to remove product from lid.  For In vitro laboratory use only. Not for any clinical, therapeutic, or diagnostic use in humans or animals. Not for animal or human consumption.  <b>This product may not be resold or modified for resale without the prior written approval of Bethyl Laboratories, Inc.</b>
<b>Related Products:</b>	Rabbit anti-NIF1 Antibody (BL2737), Affinity Purified <span style="float: right;">A300-797A</span> NIF1 Antibody AbVantage Pack <span style="float: right;">A310-248A</span> NIF1 Blocking Peptide (BP2739) <span style="float: right;">BP300-798</span>

**Catalog No.**

A300-798A

**Reactivity:** Human and mouse. Other species have not been tested.

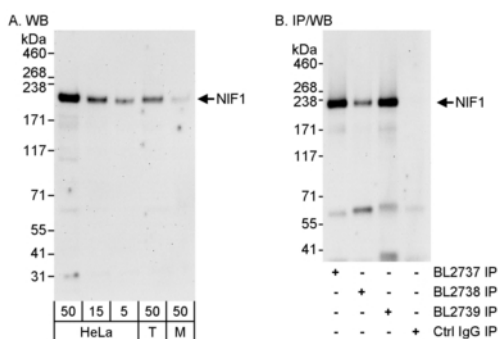
**Applications:** Optimal working dilutions should be determined experimentally by the investigator. Prepare working dilution immediately before use. Suggested starting dilutions are as follows:

Western Blot: 1:2,000 to 1:10,000.

Immunoprecipitation: 2 to 5 mcg/mg lysate.

Immunohistochemistry: Not tested.

Immunocytochemistry: Not tested.



**Detection of Human and Mouse NIF1 by WB (h&m) and Immunoprecipitation (h).** *Samples:* Whole cell lysate from HeLa (5, 15 and 50 mcg for WB; 1 mg for IP, 20% of IP loaded), 293T (T; 50 mcg) and mouse NIH3T3 (M; 50 mcg) cells. *Antibodies:* Affinity purified rabbit anti-NIF1 antibody BL2739 (Cat. No. A300-798A) used for WB at 0.04 mcg/ml (A) and at 1 mcg/ml (B) and used for IP at 3 mcg/mg lysate (B). NIF1 was also immunoprecipitated by rabbit anti-NIF1 antibodies BL2737 (Cat. No. A300-797A) and BL2738. For blotting immunoprecipitated NIF1, ReliaBLOT™ Reagents and Procedures (Cat. No. WB120) were used. *Detection:* Chemiluminescence with exposure times of 3 minutes (A) and 30 seconds (B).

**Catalog No.**

A300-798A

---

## **MATERIAL SAFETY DATA SHEET**

### **Contents Description**

This product contains Rabbit immunoglobulin G (IgG) protein in Tris-buffered Saline containing 0.1% BSA with 0.09% Sodium Azide.

### **Hazardous Ingredients**

Rabbit IgG Protein - No known toxicity for this biological material.

Sodium Azide ( $\text{NaN}_3$ ) - AZIDE FORMS EXPLOSIVE CHEMICAL COMPOUNDS WITH LEAD AND COPPER PLUMBING. CARE MUST BE TAKEN TO WASH WASTE DOWN DRAINS WITH LARGE VOLUMES OF WATER.  
LD50 oral mouse - 27 mg/kg.

Wash all affected areas with large volumes of water and if swallowed consult your physician immediately.

The above information is believed to be correct but does not purport to be all-inclusive and is intended to be used only as a guide. Bethyl Laboratories, Inc. shall not be liable or responsible in any way for use of either this information or the material supplied. Disposal of hazardous material may be subject to federal, state, or local laws or regulations.