

Jarid1A/RBP2 Antibody

Affinity Purified

Produced in Rabbit

Catalog No.

A300-897A



Storage: 2-8° C

Amount: 0.1 ml at 0.2 mg/ml

Buffer: Tris-buffered Saline containing 0.1% BSA with 0.09% Sodium Azide

Shelf Life: 1 year from date of receipt

Production Procedures: Antibody was affinity purified using an epitope specific to Jarid1A/RBP2 immobilized on solid support.

The epitope recognized by A300-897A maps to a region between residue 1675 and the C-terminus (residue 1722) of human Jumonji/ARID Domain-Containing Protein 1A/Retinoblastoma Binding Protein 2 Homolog 1 using the numbering given in entry NP_005047.1 (GeneID 5927).

Antibody concentration was determined by extinction coefficient: absorbance at 280 nm of 1.4 equals 1.0 mg of IgG.

Alternate Names: Jarid1A, Jumonji/ARID Domain-Containing Protein 1A, RBP2, RBBP2, RBP2H1, RBP2-H1, Retinoblastoma Binding Protein 2 Homolog 1

Country of Origin: USA

Notes: Centrifuge tube to remove product from lid.

For In vitro laboratory use only. Not for any clinical, therapeutic, or diagnostic use in humans or animals. Not for animal or human consumption.

This product may not be resold or modified for resale without the prior written approval of Bethyl Laboratories, Inc.

Related Products:	Rabbit anti-JMJD2A Antibody, Affinity Purified	A300-860A
	Rabbit anti-JMJD2A Antibody, Affinity Purified	A300-861A
	Rabbit anti-JMJD1B Antibody, Affinity Purified	A300-883A
	Rabbit anti-JMJD1C Antibody, Affinity Purified	A300-884A
	Rabbit anti-JMJD2C Antibody, Affinity Purified	A300-885A
	Jarid1A/RBP2 Blocking Peptide	BP300-897

Catalog No.

A300-897A

Reactivity: Human and mouse. Other species have not been tested.

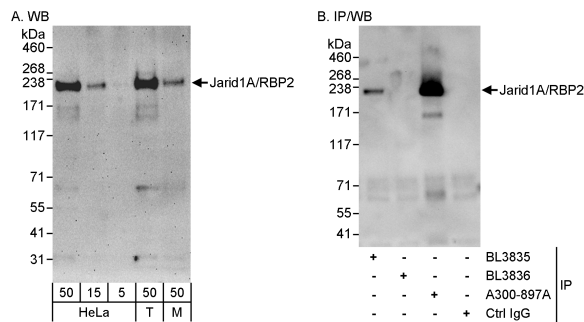
Applications: Optimal working dilutions should be determined experimentally by the investigator. Prepare working dilution immediately before use. Suggested starting dilutions are as follows:

Western Blot: 1:2,000 to 1:10,000.

Immunoprecipitation: 2 to 5 mcg/mg lysate.

Immunohistochemistry: Not tested.

Immunocytochemistry: Not tested.



Detection of Human and Mouse Jarid1A/RBP2 by WB (h&m) and Immunoprecipitation (h). *Samples:* Whole cell lysate from HeLa (5, 15 and 50 mcg for WB; 1 mg for IP, 20% of IP loaded), 293T (T; 50 mcg), and mouse NIH3T3 (M; 50 mcg) cells. *Antibodies:* Affinity purified rabbit anti-Jarid1A/RBP2 antibody A300-897A used for WB at 0.04 mcg/ml (A) and 1 mcg/ml (B) and used for IP at 3 mcg/mg lysate (B). Jarid1A/RBP2 was also immunoprecipitated by rabbit anti-Jarid1A/RBP2 antibody BL3835, which recognizes an upstream epitope. For blotting immunoprecipitated Jarid1A/RBP2, ReliaBLOT™ Reagents and Procedures (Cat. No. WB120) were used. *Detection:* Chemiluminescence with exposure times of 3 minutes (A) and 10 seconds (B).

Catalog No.

A300-897A

MATERIAL SAFETY DATA SHEET

Contents Description

This product contains Rabbit immunoglobulin G (IgG) protein in Tris-buffered Saline containing 0.1% BSA with 0.09% Sodium Azide.

Hazardous Ingredients

Rabbit IgG Protein - No known toxicity for this biological material.

Sodium Azide (NaN_3) - AZIDE FORMS EXPLOSIVE CHEMICAL COMPOUNDS WITH LEAD AND COPPER PLUMBING. CARE MUST BE TAKEN TO WASH WASTE DOWN DRAINS WITH LARGE VOLUMES OF WATER.
LD50 oral mouse - 27 mg/kg.

Wash all affected areas with large volumes of water and if swallowed consult your physician immediately.

The above information is believed to be correct but does not purport to be all-inclusive and is intended to be used only as a guide. Bethyl Laboratories, Inc. shall not be liable or responsible in any way for use of either this information or the material supplied. Disposal of hazardous material may be subject to federal, state, or local laws or regulations.