

MST4/MASK Antibody
AbVantage™ Pack
Affinity Purified



Catalog No.
A310-165A

Contents: Rabbit anti-MST4/MASK (BL2703) A300-565A
Rabbit anti-MST4/MASK (BL2704) A300-566A

Storage: 2 - 8⁰ C

Shelf life: 1 year from date of receipt

Notes: Centrifuge microtube to remove product from lid.

For In vitro laboratory use only. Not for any clinical, therapeutic, or diagnostic use in humans or animals. Not for animal or human consumption.

This product may not be resold or modified for resale without the prior written approval of Bethyl Laboratories, Inc.

Alternative Names: MST4, MST-4, Mammalian Ste20-like Kinase 4, MASK, Mst3 and SOK1-related Kinase.

Country of Origin: USA

MST4(MASK) Antibody (BL2703)
Affinity Purified



Produced in Rabbit

Catalog No.
A300-565A

Storage:	2 - 8 ⁰ C														
Amount:	0.1 ml at 1.0 mg/ml														
Buffer:	Tris-citrate/phosphate, pH 7 to 8 containing 0.09% Sodium Azide														
Shelf life:	1 year from date of receipt														
Production Procedures:	<p>Antibody was affinity purified using an epitope specific to MST4(MASK) immobilized on solid support.</p> <p>The epitope recognized by A300-565A maps to a region between residues 300 and 350 of human Mammalian Ste20-like Kinase 4 (Mst3 and SOK1-related kinase) using the numbering given in entry NP_057626.2 (GeneID 51765).</p> <p>Antibody concentration was determined by extinction coefficient: absorbance at 280 nm of 1.4 equals 1.0 mg of IgG.</p>														
Alternative Names:	MST4, MST-4, Mammalian Ste20-like Kinase 4, MASK, Mst3 and SOK1-related Kinase.														
Country of Origin:	USA														
Notes:	<p>Centrifuge microtube to remove product from lid.</p> <p>For in vitro laboratory use only. Not for any clinical, therapeutic, or diagnostic use in humans or animals. Not for animal or human consumption.</p> <p>This product may not be resold or modified for resale without the prior written approval of Bethyl Laboratories, Inc.</p>														
Related Products:	<table><tr><td>MST4(MASK) Blocking Peptide BP2703</td><td>BP300-565</td></tr><tr><td>R anti-MST4(MASK) Antibody BL2704</td><td>A300-566A</td></tr><tr><td>R anti-MST1(STK4) Antibody BL2199</td><td>A300-465A</td></tr><tr><td>R anti-MST2(STK3) Antibody BL2203</td><td>A300-467A</td></tr><tr><td>R anti-MST1/2(STK3/4) Antibody BL2200</td><td>A300-466A</td></tr><tr><td>R anti-MST1/2(STK3/4) Antibody BL2204</td><td>A300-468A</td></tr><tr><td>R anti-MST3(STK24) Antibody BL2700</td><td>A300-564A</td></tr></table>	MST4(MASK) Blocking Peptide BP2703	BP300-565	R anti-MST4(MASK) Antibody BL2704	A300-566A	R anti-MST1(STK4) Antibody BL2199	A300-465A	R anti-MST2(STK3) Antibody BL2203	A300-467A	R anti-MST1/2(STK3/4) Antibody BL2200	A300-466A	R anti-MST1/2(STK3/4) Antibody BL2204	A300-468A	R anti-MST3(STK24) Antibody BL2700	A300-564A
MST4(MASK) Blocking Peptide BP2703	BP300-565														
R anti-MST4(MASK) Antibody BL2704	A300-566A														
R anti-MST1(STK4) Antibody BL2199	A300-465A														
R anti-MST2(STK3) Antibody BL2203	A300-467A														
R anti-MST1/2(STK3/4) Antibody BL2200	A300-466A														
R anti-MST1/2(STK3/4) Antibody BL2204	A300-468A														
R anti-MST3(STK24) Antibody BL2700	A300-564A														

Cat. No.
A300-565A

Reactivity: Human. Other species have not been tested.

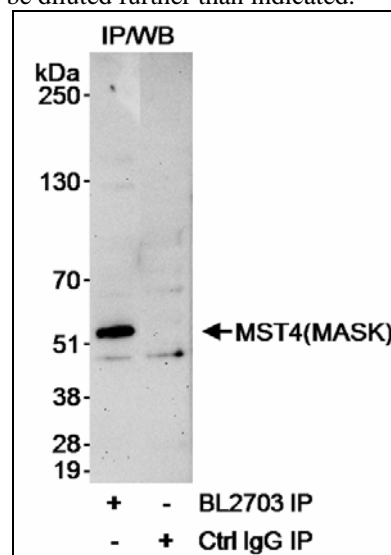
Applications: Optimal working dilutions should be determined experimentally by the investigator. Prepare working dilution immediately before use. Suggested starting dilutions are as follows.

Western Blot: Not recommended. Use rabbit anti-MST4(MASK) antibody BL2704 (Cat. No. A300-566A)

Immunoprecipitation: 1 to 4 mcg/mg of lysate

IHC/ICC/IF: not tested

In some cases, the antibody may be diluted further than indicated.



Detection of Human MST4(MASK) by Western Blot after Immunoprecipitation. *Samples:* Whole cell lysate (1 mg for IP; 1/4 of IP reaction loaded) from HeLa cells. *Antibodies:* Affinity purified rabbit anti-MST4(MASK) antibody BL2703 (Cat. No. A300-565A) used at 3 mcg/mg lysate for IP. Immunoprecipitated MST4(MASK) was blotted using rabbit anti-MST4(MASK) antibody BL2704 (Cat. No. A300-566A), which binds a downstream epitope, at 0.1 mcg/ml. *Detection:* Chemiluminescence with an exposure time of 3 minutes.

MST4(MASK) Antibody (BL2704)
Affinity Purified



Produced in Rabbit

Catalog No.
A300-566A

Storage:	2 - 8 ⁰ C														
Amount:	0.1 ml at 0.2 mg/ml														
Buffer:	Tris-buffered Saline containing 0.1% BSA and 0.09% Sodium Azide														
Shelf life:	1 year from date of receipt														
Production Procedures:	<p>Antibody was affinity purified using an epitope specific to MST4(MASK) immobilized on solid support.</p> <p>The epitope recognized by A300-566A maps to a region between residue 375 and the C-terminus (residue 416) of human Mammalian Ste20-like Kinase 4 (Mst3 and SOK1-related kinase) using the numbering given in entry NP_057626.2 (GeneID 51765).</p> <p>Antibody concentration was determined by extinction coefficient: absorbance at 280 nm of 1.4 equals 1.0 mg of IgG.</p>														
Alternative Names:	MST4, MST-4, Mammalian Ste20-like Kinase 4, MASK, Mst3 and SOK1-related Kinase.														
Country of Origin:	USA														
Notes:	<p>Centrifuge microtube to remove product from lid.</p> <p>For in vitro laboratory use only. Not for any clinical, therapeutic, or diagnostic use in humans or animals. Not for animal or human consumption.</p> <p>This product may not be resold or modified for resale without the prior written approval of Bethyl Laboratories, Inc.</p>														
Related Products:	<table><tr><td>MST4(MASK) Blocking Peptide BP2704</td><td>BP300-566</td></tr><tr><td>R anti-MST4(MASK) Antibody BL2703</td><td>A300-565A</td></tr><tr><td>R anti-MST1(STK4) Antibody BL2199</td><td>A300-465A</td></tr><tr><td>R anti-MST2(STK3) Antibody BL2203</td><td>A300-467A</td></tr><tr><td>R anti-MST1/2(STK3/4) Antibody BL2200</td><td>A300-466A</td></tr><tr><td>R anti-MST1/2(STK3/4) Antibody BL2204</td><td>A300-468A</td></tr><tr><td>R anti-MST3(STK24) Antibody BL2700</td><td>A300-564A</td></tr></table>	MST4(MASK) Blocking Peptide BP2704	BP300-566	R anti-MST4(MASK) Antibody BL2703	A300-565A	R anti-MST1(STK4) Antibody BL2199	A300-465A	R anti-MST2(STK3) Antibody BL2203	A300-467A	R anti-MST1/2(STK3/4) Antibody BL2200	A300-466A	R anti-MST1/2(STK3/4) Antibody BL2204	A300-468A	R anti-MST3(STK24) Antibody BL2700	A300-564A
MST4(MASK) Blocking Peptide BP2704	BP300-566														
R anti-MST4(MASK) Antibody BL2703	A300-565A														
R anti-MST1(STK4) Antibody BL2199	A300-465A														
R anti-MST2(STK3) Antibody BL2203	A300-467A														
R anti-MST1/2(STK3/4) Antibody BL2200	A300-466A														
R anti-MST1/2(STK3/4) Antibody BL2204	A300-468A														
R anti-MST3(STK24) Antibody BL2700	A300-564A														

MST4(MASK) Antibody (BL2704)

Bethyl Laboratories, Inc.

Cat. No.
A300-566A

Reactivity: Human. Other species have not been tested.

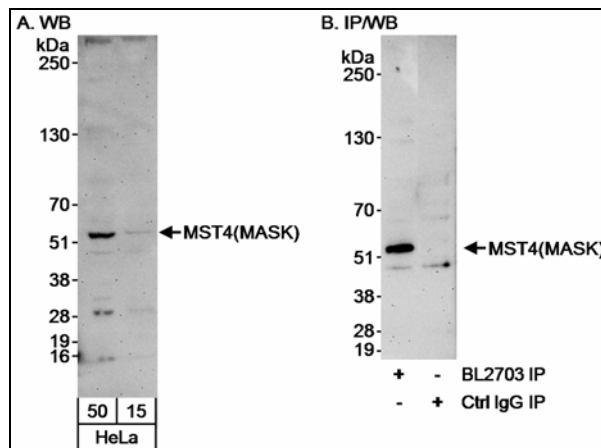
Applications: Optimal working dilutions should be determined experimentally by the investigator. Prepare working dilution immediately before use. Suggested starting dilutions are as follows.

Western Blot: 1:1,000 to 1:10,000

Immunoprecipitation: Not recommended. Use rabbit anti-MST4(MASK) antibody BL2703 (Cat. No. A300-565A)

IHC/ICC/IF: not tested

In some cases, the antibody may be diluted further than indicated.



Detection of Human MST4(MASK) by Western Blot and Immunoprecipitation. *Samples:* Whole cell lysate (15 and 50 mcg for WB in A; 1 mg for IP, 1/4 of IP loaded in B) from HeLa cells. *Antibodies:* Affinity purified rabbit anti-MST4(MASK) antibody BL2704 (Cat. No. A300-566A) used at 0.04 mcg/ml (A) and 1 mcg/ml (B) for WB. MST4(MASK) was immunoprecipitated using rabbit anti-MST4(MASK) antibody BL2703 (Cat. No. A300-565A), which binds an upstream epitope, at 3 mcg/mg lysate. *Detection:* Chemiluminescence with exposure times of 3 minutes (A and B).

MST4/MASK Antibody
AbVantage™ Pack
Affinity Purified



Catalog No.
A310-165A

MATERIAL SAFETY DATA SHEET

Contents Description

Each antibody product contains rabbit immunoglobulin G (IgG) protein in Tris-citrate/phosphate buffer, pH 7 to 8 with 0.1% BSA and 0.1% Sodium Azide (NaN_3).

Hazardous Ingredients

Rabbit IgG Protein - No known toxicity for this biological material.

Bovine Serum Albumin (BSA) - No known toxicity for this biological material.

Sodium Azide (NaN_3) - AZIDE FORMS EXPLOSIVE CHEMICAL COMPOUNDS WITH LEAD AND COPPER PLUMBING. CARE MUST BE TAKEN TO WASH WASTE DOWN DRAINS WITH LARGE VOLUMES OF WATER.

LD50 oral mouse - 27 mg/kg.

Wash all affected areas with large volumes of water and if swallowed consult your physician immediately.

The above information is believed to be correct but does not purport to be all-inclusive and is intended to be used only as a guide. Bethyl Laboratories, Inc. shall not be liable or responsible in any way for use of either this information or the material supplied. Disposal of hazardous material may be subject to federal, state, or local laws or regulations.