

VCP Antibody
AbVantage™ Pack
Affinity Purified



Catalog No.

A310-174A

Contents: Rabbit anti-VCP Antibody (BL2519) A300-588A
Rabbit anti-VCP Antibody (BL2520) A300-589A

Storage: 2 - 8⁰ C

Shelf life: 1 year from date of receipt

Notes: Centrifuge microtube to remove product from lid.

For In vitro laboratory use only. Not for any clinical, therapeutic, or diagnostic use in humans or animals. Not for animal or human consumption.

This product may not be resold or modified for resale without the prior written approval of Bethyl Laboratories, Inc.

Alternative Names: VCP, Valosin-Containing Protein, TERA, Transitional Endoplasmic Reticulum ATPase, p97, IBMPFD, Inclusion Body Myopathy associated with Paget Disease of Bone and Frontotemporal Dementia.

Country of Origin: USA

VCP Antibody (BL2519)
Affinity Purified

Produced in Rabbit

Catalog No.
A300-588A



Storage:	2 - 8 ⁰ C				
Amount:	0.1 ml at 0.2 mg/ml				
Buffer:	Tris-buffered Saline containing 0.1% BSA and 0.09% Sodium Azide				
Shelf life:	1 year from date of receipt				
Production Procedures:	<p>Antibody was affinity purified using an epitope specific to VCP immobilized on solid support.</p> <p>The epitope recognized by A300-588A maps to a region between residues 1 and 50 of human Valosin-Containing Protein using the numbering given in entry NP_009057.1 (GeneID 7415).</p> <p>Antibody concentration was determined by extinction coefficient: absorbance at 280 nm of 1.4 equals 1.0 mg of IgG.</p>				
Alternative Names:	VCP, Valosin-Containing Protein, TERA, Transitional Endoplasmic Reticulum ATPase, p97, IBMPFD, Inclusion Body Myopathy associated with Paget Disease of Bone and Frontotemporal Dementia.				
Country of Origin:	USA				
Notes:	<p>Centrifuge microtube to remove product from lid.</p> <p>For in vitro laboratory use only. Not for any clinical, therapeutic, or diagnostic use in humans or animals. Not for animal or human consumption.</p> <p>This product may not be resold or modified for resale without the prior written approval of Bethyl Laboratories, Inc.</p>				
Related Products:	<table><tr><td>VCP Blocking Peptide BP2519</td><td>BP300-588</td></tr><tr><td>R anti-VCP Antibody BL2520</td><td>A300-589A</td></tr></table>	VCP Blocking Peptide BP2519	BP300-588	R anti-VCP Antibody BL2520	A300-589A
VCP Blocking Peptide BP2519	BP300-588				
R anti-VCP Antibody BL2520	A300-589A				

VCP Antibody (BL2520)
Affinity Purified

Produced in Rabbit

Catalog No.
A300-589A



Storage:	2 - 8 ^o C				
Amount:	0.1 ml at 0.2 mg/ml				
Buffer:	Tris-buffered Saline containing 0.1% BSA and 0.09% Sodium Azide				
Shelf life:	1 year from date of receipt				
Production Procedures:	<p>Antibody was affinity purified using an epitope specific to VCP immobilized on solid support.</p> <p>The epitope recognized by A300-589A maps to a region between residue 750 and the C-terminus (residue 806) of human Valosin-Containing Protein using the numbering given in entry NP_009057.1 (GeneID 7415).</p> <p>Antibody concentration was determined by extinction coefficient: absorbance at 280 nm of 1.4 equals 1.0 mg of IgG.</p>				
Alternative Names:	VCP, Valosin-Containing Protein, TERA, Transitional Endoplasmic Reticulum ATPase, p97, IBMPFD, Inclusion Body Myopathy associated with Paget Disease of Bone and Frontotemporal Dementia.				
Country of Origin:	USA				
Notes:	<p>Centrifuge microtube to remove product from lid.</p> <p>For in vitro laboratory use only. Not for any clinical, therapeutic, or diagnostic use in humans or animals. Not for animal or human consumption.</p> <p>This product may not be resold or modified for resale without the prior written approval of Bethyl Laboratories, Inc.</p>				
Related Products:	<table><tr><td>VCP Blocking Peptide BP2520</td><td>BP300-589</td></tr><tr><td>R anti-VCP Antibody BL2519</td><td>A300-588A</td></tr></table>	VCP Blocking Peptide BP2520	BP300-589	R anti-VCP Antibody BL2519	A300-588A
VCP Blocking Peptide BP2520	BP300-589				
R anti-VCP Antibody BL2519	A300-588A				

Cat. No.
A300-589A

Reactivity: Human and mouse. Other species have not been tested.

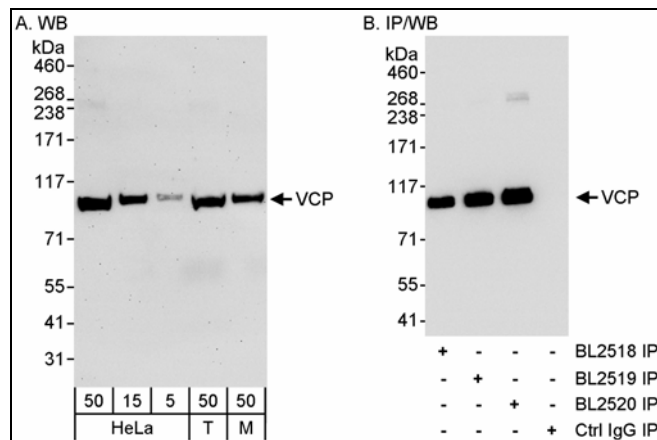
Applications: Optimal working dilutions should be determined experimentally by the investigator. Prepare working dilution immediately before use. Suggested starting dilutions are as follows.

Western Blot: 1:5,000 – 1:15,000

Immunoprecipitation: 1 to 4 mcg/mg of lysate

IHC/ICC/IF: not tested

In some cases, the antibody may be diluted further than indicated.



Detection of Human and Mouse VCP by Western Blot (H & M) and Immunoprecipitation (H).

Samples: Whole cell lysate from HeLa (5, 15 and 50 mcg for WB; 1 mg for IP, 1/4 of IP loaded), 293T (T, 50 mcg for WB) and mouse NIH3T3 (M, 50 mcg for WB) cells. *Antibodies:* Affinity purified rabbit anti-VCP antibody BL2520 (Cat. No. A300-589A) used for WB at 0.04 mcg/ml (A) and 1 mcg/ml (B), and used in IP at 3 mcg/mg lysate (B). VCP was also immunoprecipitated using rabbit anti-VCP antibodies BL2518 and BL2519 (Cat. No. A300-588A) at 3 mcg/mg lysate. For detecting immunoprecipitated VCP, ReliaBLOT™ reagents and procedures were utilized. *Detection:* Chemiluminescence with exposure times of 3 minutes (A) and 10 seconds (B).

VCP Antibody
AbVantage™ Pack
Affinity Purified



Catalog No.
A310-174A

MATERIAL SAFETY DATA SHEET

Contents Description

Each antibody product contains rabbit immunoglobulin G (IgG) protein in Tris-buffered Saline with 0.1% BSA and 0.1% Sodium Azide (NaN₃).

Hazardous Ingredients

Rabbit IgG Protein - No known toxicity for this biological material.

Bovine Serum Albumin (BSA) - No known toxicity for this biological material.

Sodium Azide (NaN₃) - AZIDE FORMS EXPLOSIVE CHEMICAL COMPOUNDS WITH LEAD AND COPPER PLUMBING. CARE MUST BE TAKEN TO WASH WASTE DOWN DRAINS WITH LARGE VOLUMES OF WATER.

LD50 oral mouse - 27 mg/kg.

Wash all affected areas with large volumes of water and if swallowed consult your physician immediately.

The above information is believed to be correct but does not purport to be all-inclusive and is intended to be used only as a guide. Bethyl Laboratories, Inc. shall not be liable or responsible in any way for use of either this information or the material supplied. Disposal of hazardous material may be subject to federal, state, or local laws or regulations.